

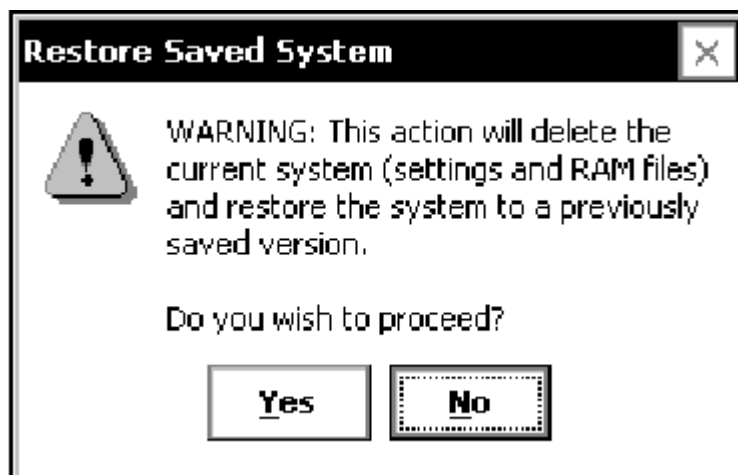
THALES NAVIGATION	Marketing & Technical Tips		
ZMax	N° 2004/04	June 2 nd	By : Patrick BOURIAUD Checked : Denis BERNARD
Save/Restore your data in the Juniper Allegro			

➤ **Restore System**

When receiving your Juniper Allegro from Thales Navigation, everything has been saved in the non-volatile solid memory at factory.

If for any reason something disappears on the field terminal, software, data, registration, etc., you may restore them :

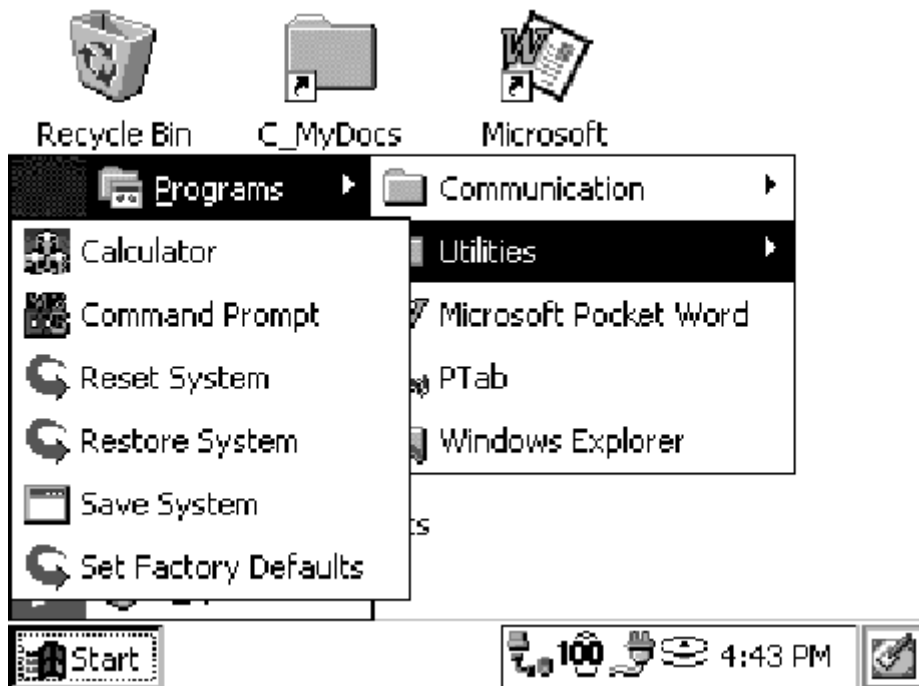
Go to *Start|Programs|Utilities|Restore System*. You will receive the following Warning screen, explaining to you what will happen if you proceed with this function.



Press Yes to restore the data that have been saved from the previous 'Save System'.

➤ **Save System**

The Save System option creates a copy of RAM and saves it to a location on the C_Drive. This saved image of RAM is used when a Restore System is either executed by the menu selection, or when the operating system is loaded and an automatic restore is performed. It is located at *Start|Programs|Utilities|Save System*.



When Save System utility is selected, the following message is shown:



Warning !! : do not use Set Factory Defaults unless you want to reinstall all your software's in your field terminal.

Set Factory Defaults deletes the existing Saved System that is on the C_Drive, erases RAM, and reloads the operating system. When the operating system is reloaded, the automatic restoration won't find a backup, so the system will come up and in the factory default condition.

Storing the Allegro CE During Inactive Periods

To protect the Allegro and your files during long or short-term storage periods, please take the following precautions:

- . Close all application programs.
- . Run the *Save System* utility.

The data and programs are secure as long as they have been saved to the non-volatile solid state storage, even if the batteries become discharged. The Allegro does not depend on the battery to store the data for extended periods.